

2013 .

*

I

Ryanair.

2013 .

(.1)

2013 .
(2012 .
1.8%).

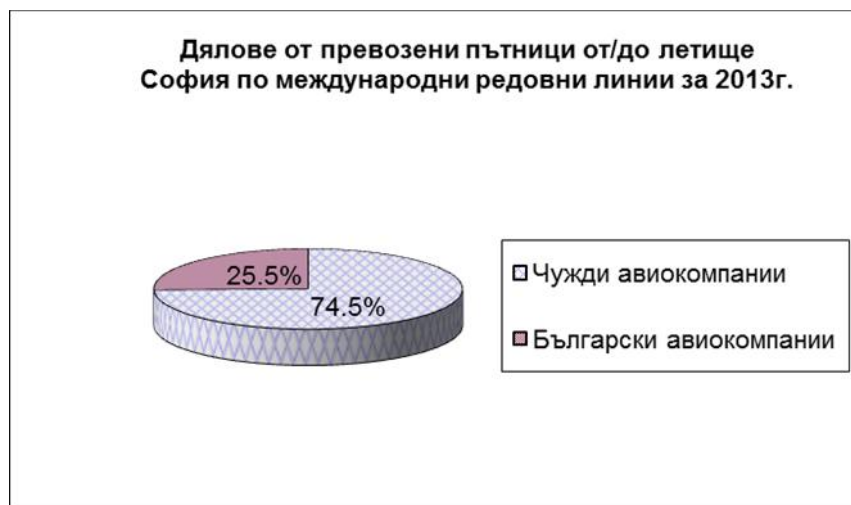
3.143 .

2013 . 2012 .

3.198 .

- 2013 . 2012 . 8.1%).
2013 . е 25.5 % (24% 2012 .);
- 2013 . 2012 . 0.2%).
2013 . – 74.5% (2012 . 76%).

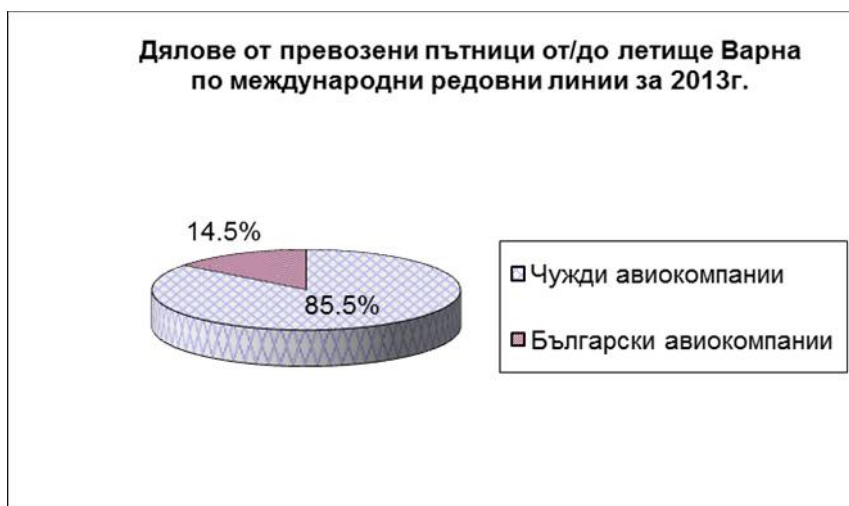
. 1



360 . . (2012 . 305 . / (.2)
 17.9%) :

- 53 . 14.5%. 2012 .
- 35 . 11.4%; 307 . 85.5%.
- 2012 . 270 . 88.6%;

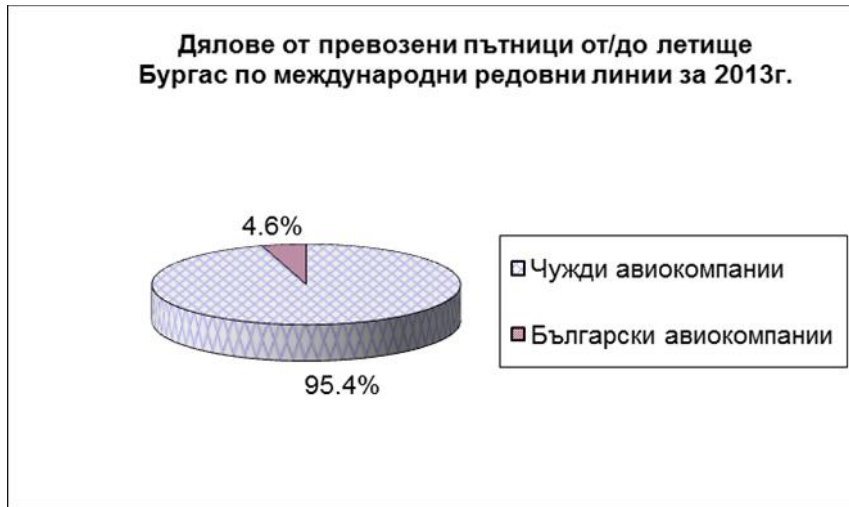
.2



/ (.3)

571 . . (2012 . 582 . / 2013 . 2012 . 1.9%)
 :

- 27 . 4.6%. 2012 .
- 98 . 16.9%; 544 . 95.4%.
- 2012 . 483 . 83.1%.



()- .4 / ,

4.129 . (2012 . 4.029 . 2013 . 2012 . 2.5%). 2013 . –

•

- 2013 . 2012 . 0.7%); 894 . (2012 . 887 .

- 2013 . – 21.6 % . (2012 . 22%.);

•

- 2013 . 2012 . 3%); 3.235 . (2012 . 3.142 .

- 2013 . – 78.4 % (2012 . 78%).



II

2013 . /

:

- (320);
 - (-82/83);
 - (319/320);
 - (320).

/ (.5)

2012 . 4%). : 814 . (2012 . - 782 . 2013 .

▪ 336 . (2012 . 322 .)
 2013 . 2012 . 4.1%.
 / 2013 .
 41.3% (2012 . 41.2%);

▪ 478 . (2012 . 460 .)
 2013 . 2012 . 4%.
 / 58.7% (2012 .
 58.8%).



2013 . /
2012 . **1.711** . 2013 . 2012 . 7.9%). : **1.847** . (

- **724** . (2012 . 631 .)
2013 . 2012 . 14.8%.
/ 2013 .
39.2% (2012 . 36.9%).
- **1.122** . (2012 . 1.080 .)
2013 . 2012 . 3.9%.
/ 60.8% (2012 .
63.1%)



2013 .
(. 7):

- 2.493 .).
2013 . 2012 . 6.7%;
- 2.660 . (2012 .
/
- 1.060 . (2012 . 953 .).
/ 2013 . 39.8%
2013 . 2012 . 11.2%.
(2012 . 38.2%);
- 1.600 . (2012 . 1.540 .).
/ 2013 .
2012 . 3.9%. 2013 . 60.2 % (2012 . 61.8%).

7.



- /
- ; /
- ;
- ;

- ;
 - .
 (2012 . 118 . , / 2013 . 121 .
 1.8%). 2013 . 2012 .

- :
- 2013 . 2012 . 49 . . (2012 . 52 .
 40.4% 2013 . 2012 . 7.1%).
 - 2013 . 2012 . 72 . . (2012 . 44.3%);
 59.6% 2013 . 2012 . 9%). 66
 55.7%).

.8 2013 . /

.8

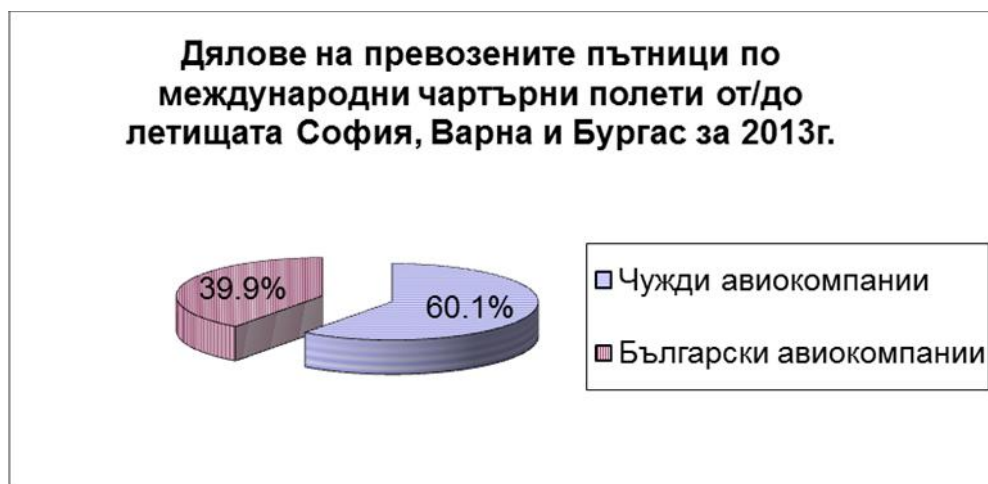


) / , (2013 . – 2.781 .
 (2012 . 2.612 . 2013 . 2012 . 6.5%).

- 2013 . 2012 . 10.3%.) - 1.109 . (2012 . 1.006

- 38.5%); 2013 . 39.9% (2012 .

.9



- 2013 . 2012 . 4.1%); - 1.672 . (2012 . 1.606

- 61.5%); 2013 . 60.1% (2012 .

III

,

) 2013 . : (

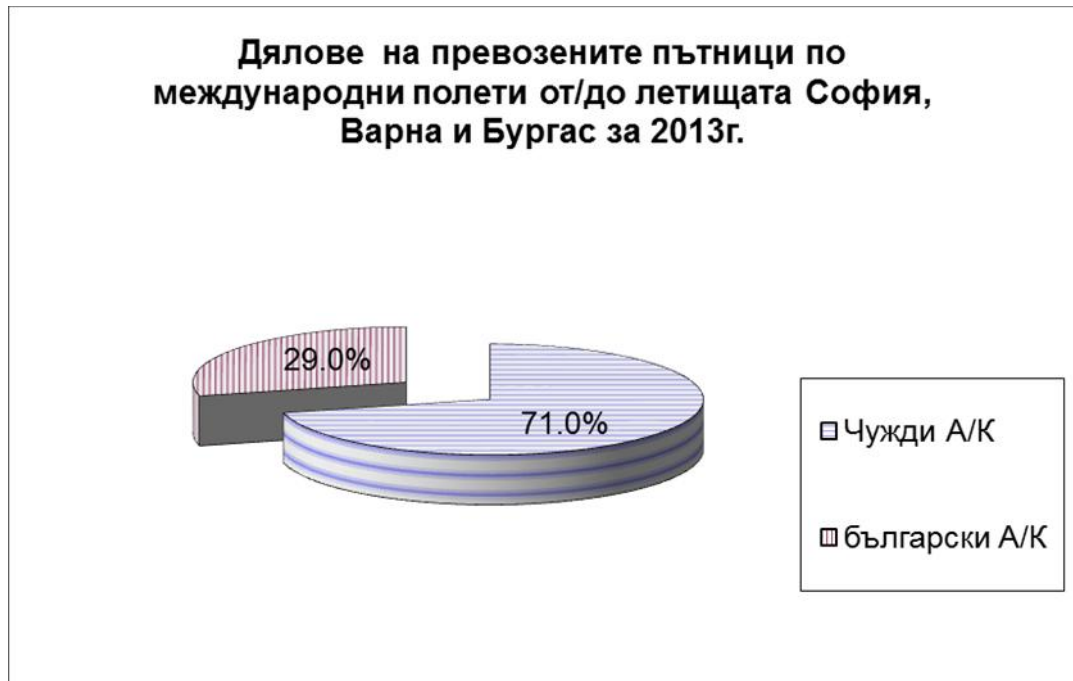
- 2013 . 2012 . 4.04%); 2013 . – 6.910 . (2012 . 6.641 .

- 2012 . 1.892 . 2013 . 2012 . 5.8%); 2013 . – 2.002 . (

- 2013 . – 29% (28.5 % 2012 .)

- (2012 . 4.749 . 2013 . 2012 . 3.3%);
 - 2013 . – 71% (71.5% 2012 .)

. 10



2013 .
 91 ., 4.5% 87 . 2012 .
 / Ryanair.
 2013-